

Installing an underground pollution filter

Infiltration Trench

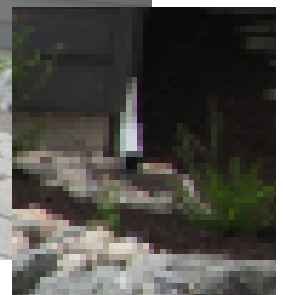
benefits

- ✓ improve your landscape
- ✓ control runoff
- ✓ receive technical assistance
- ✓ receive financial reimbursement
- ✓ protect Lake Whatcom



inviting spaces

A native plant border can create an aesthetic buffer between the patio and fence, framing the space to create ambiance.



invisible infiltration

Downspouts route water away from your home into a facility that improves water quality.



what pollution filter?

A patio disguises a water quality protection system. You can use your landscape creatively and protect Lake Whatcom.

Considering a new patio to enjoy those summer evenings on?

You can dine, relax, entertain, and protect Lake Whatcom water quality all at the same time! In some cases, an inviting patio can be designed and installed with an underground pollution filter beneath it—proving that HIP-eligible projects can be integrated into your dream yard.

HIP-certified professionals can help you design and install these and other improvements that are eligible for reimbursement—up to \$1.60 per square foot of property improved to protect Lake Whatcom.



How much space will my underground pollution filter take up?

It depends. Many factors, including soil permeability, the unique layout of your property, and the type of final surface you choose, influence the design principles used to calculate the system's size. It can be anywhere from the size of a patio you entertain on, to a walkway through your yard. A HIP-certified designer can determine the appropriate size you need.

options abound



© Jaime Hooper

A peagravel walkway can also function as an underground pollution filter. HIP-approved projects are easily combined with landscaping projects you might already be considering doing.

Rock and/or mulch can be used to cover the underground pollution filter to fulfill a variety of design aesthetics. How you want to utilize the aboveground space is typically the deciding factor.



1 Project Design*

- ✓ Confirm/test soil infiltration rate
- ✓ Choose location for filter
- ✓ Choose your surfacing material
- ✓ Lay out piping into and out of system

2 Review and Approval

- ✓ Complete application*
- ✓ Receive free permit

3 Construction & Installation*

- ✓ Dig out existing soil
- ✓ Place pipes and drains
- ✓ Install rock or sand
- ✓ Optional: place surfacing (gravel, pavers, river rock, etc.)

4 Maintain your system

- ✓ Keep pipes and drains clean and replace rock when needed.
- ✓ Other upkeep activities unique to your project.

*A HIP-certified professional can be hired to help complete these tasks for you.



QUESTIONS?

Find resources and request a free site visit at www.lakewhatcomHIP.org.