



Homeowner Incentive Program Business Training Webinar

WELCOME!

Today's Agenda

HIP 101

Why does HIP exist, and what does it offer?

HIP Professionals

How do you fit into this program?

The HIP Professional Lists

What to expect when meeting HIP Homeowners?

Business Registration and Endorsement Requirements

YOU CAN EXPECT TO...

Hear about how HIP protects Lake Whatcom

Learn how your work is HIP-eligible for reimbursement

Know the requirements for your business to participate

Leave this meeting as an “Approved” HIP professional

Homeowner Incentive Program (HIP)

Provides **technical assistance** and **financial reimbursement** to Lake Whatcom watershed residents for **voluntary** watershed-friendly projects on **residential sites**



HIP Approved Native Landscaping

Expectation Setting is Goal #1

HIP is...

A public investment meant to achieve a durable **public benefit**.

A **professional** project **design and construction** program.

A way for homeowners to be engaged **watershed stewards**.

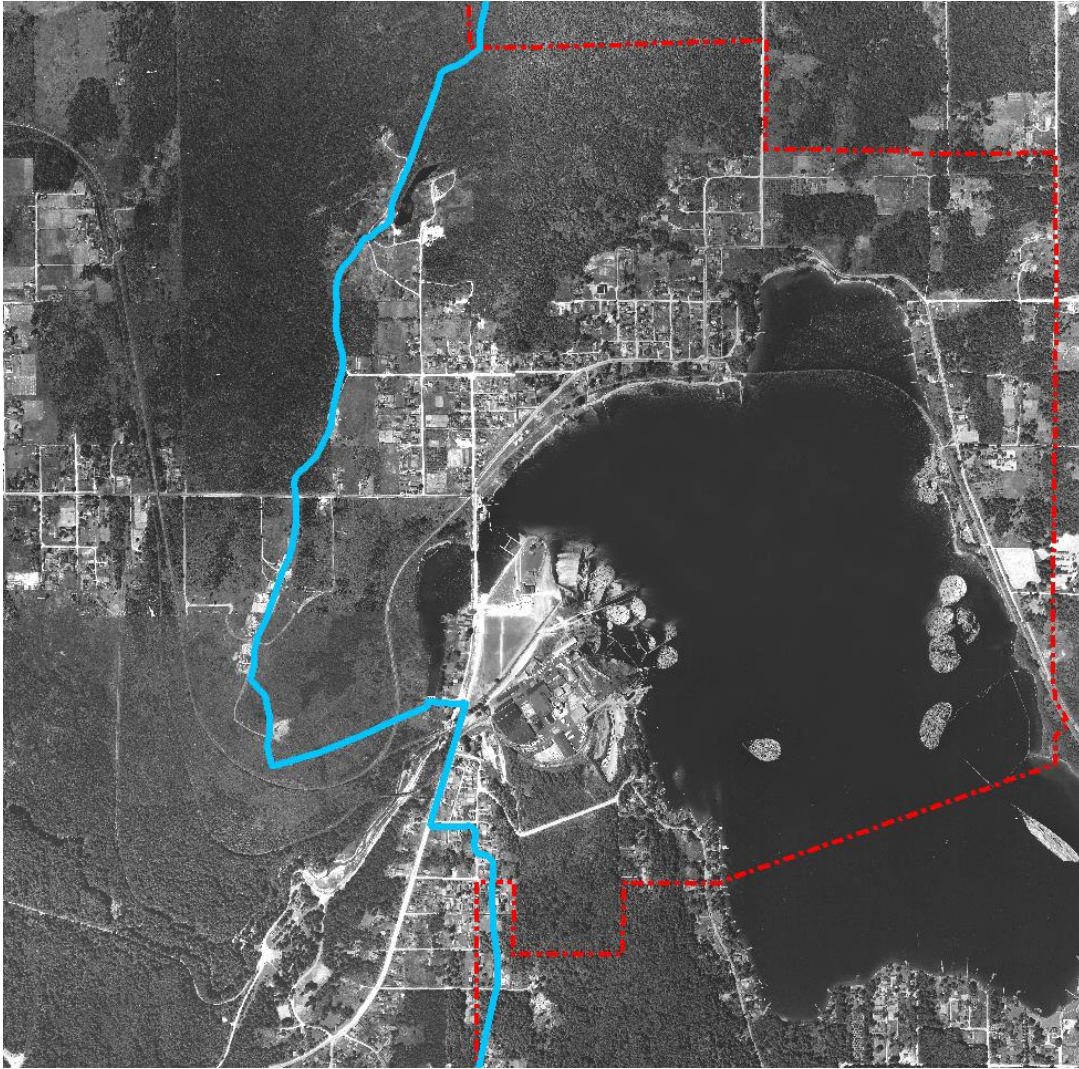
HIP is NOT...

Public money to be used for any **solely private benefit**.

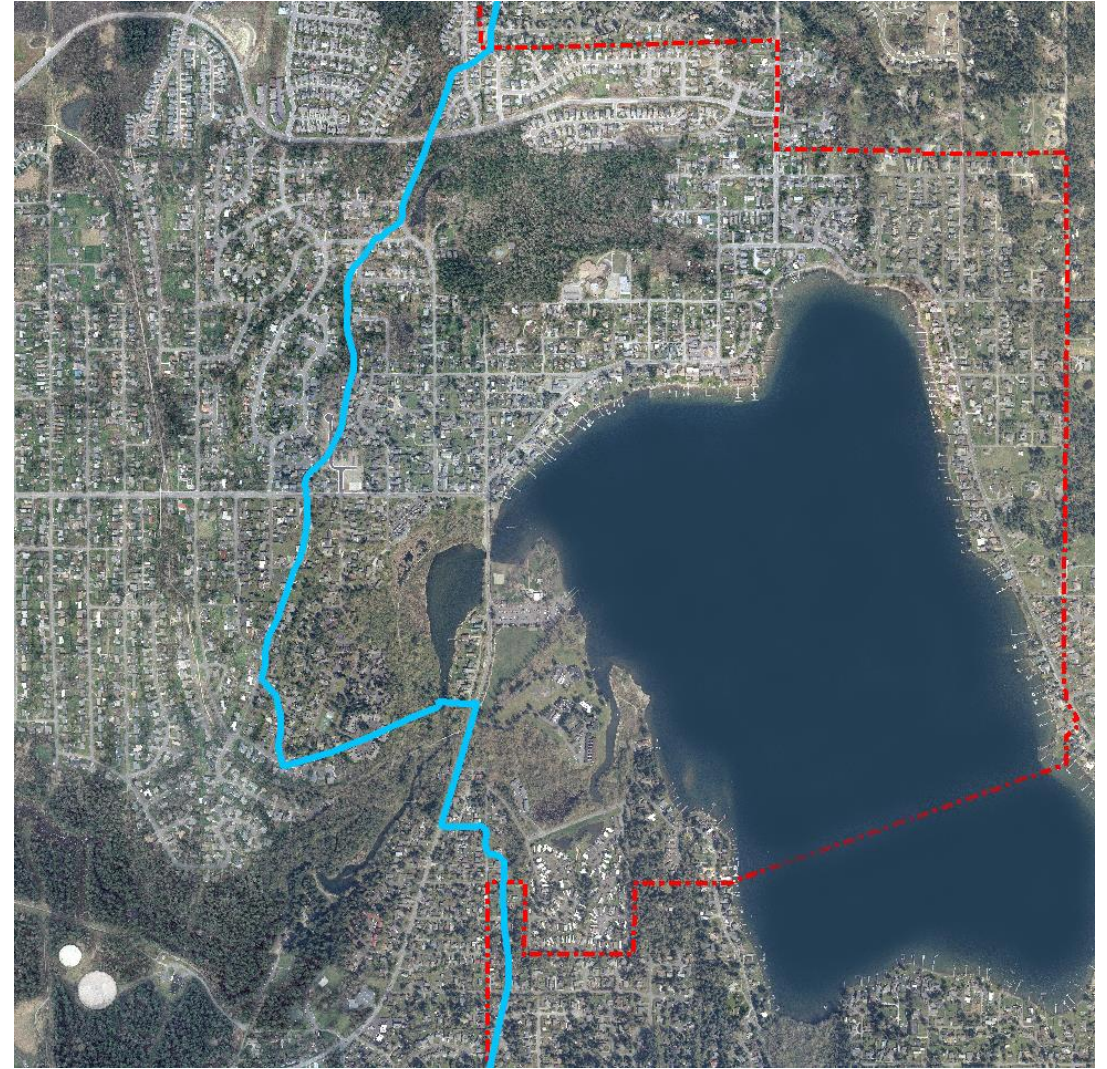
An **informal program** run by **non-experts** with questionable goals.

A way for homeowners to get **everything** they want **for free**.

1950

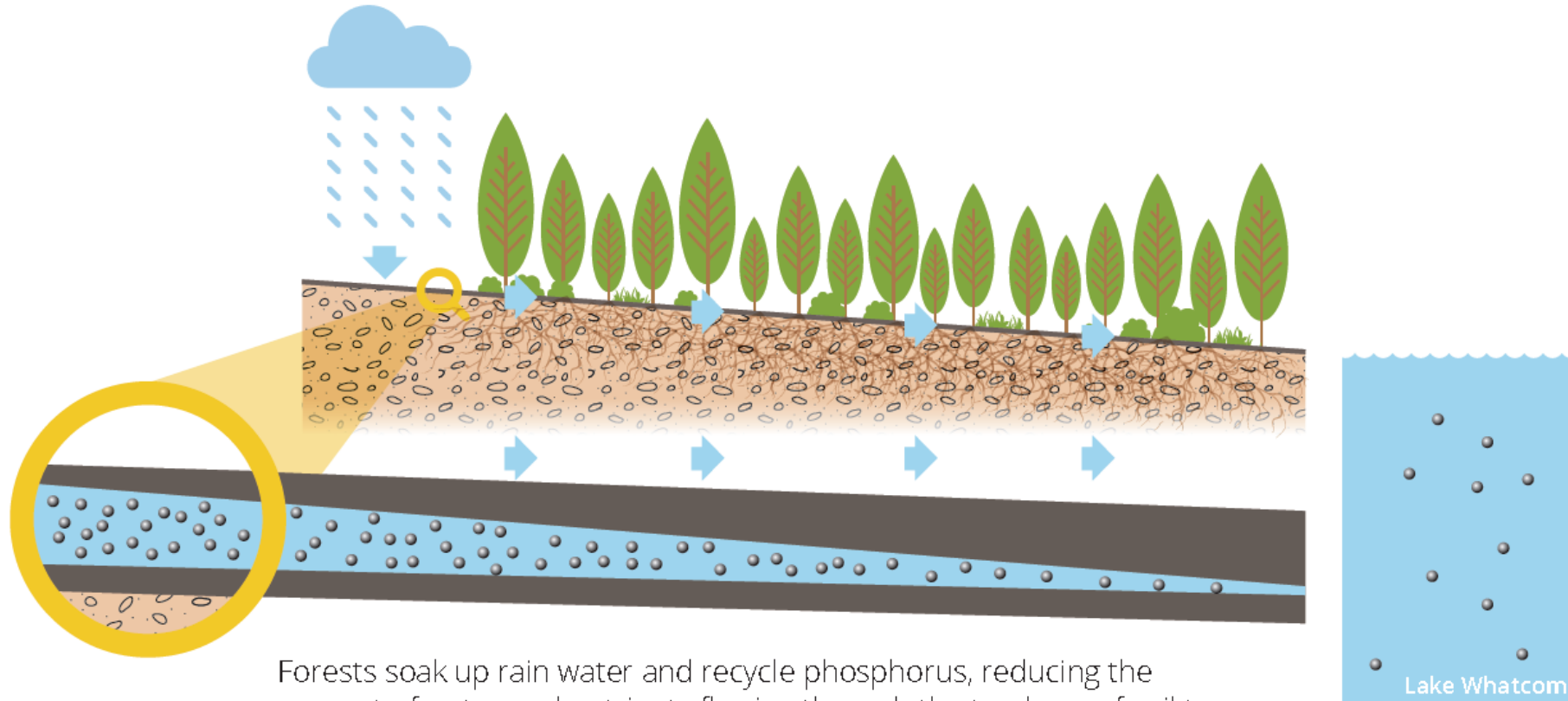


2008



— . City Limits
— Lake Whatcom Watershed

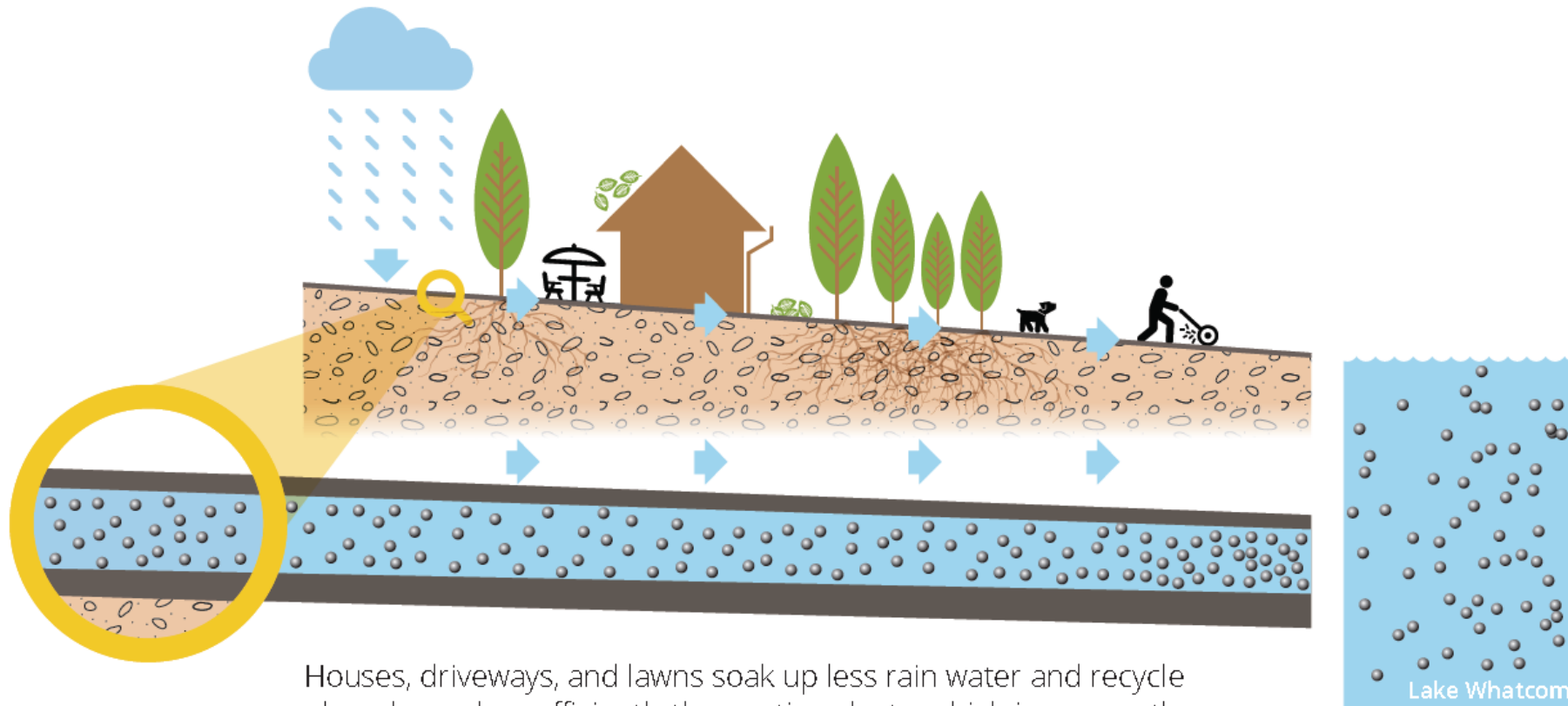
undeveloped landscape



Forests soak up rain water and recycle phosphorus, reducing the amount of water and nutrients flowing through the top layer of soil to Lake Whatcom.

● = phosphorus

developed landscape



Houses, driveways, and lawns soak up less rain water and recycle phosphorus less efficiently than native plants, which increases the amount of phosphorus in runoff that is funneled into Lake Whatcom.

● = phosphorus

designed landscape



Permeable pavement allows water to pass through hard surfaces into the soil below.



Infiltration trenches help slow and clean runoff using soil as a filter.



Leaves and clippings are composted off site to prevent the phosphorus they contain from entering Lake Whatcom.



Native landscaping captures and uses phosphorus to build healthy plants and soil.



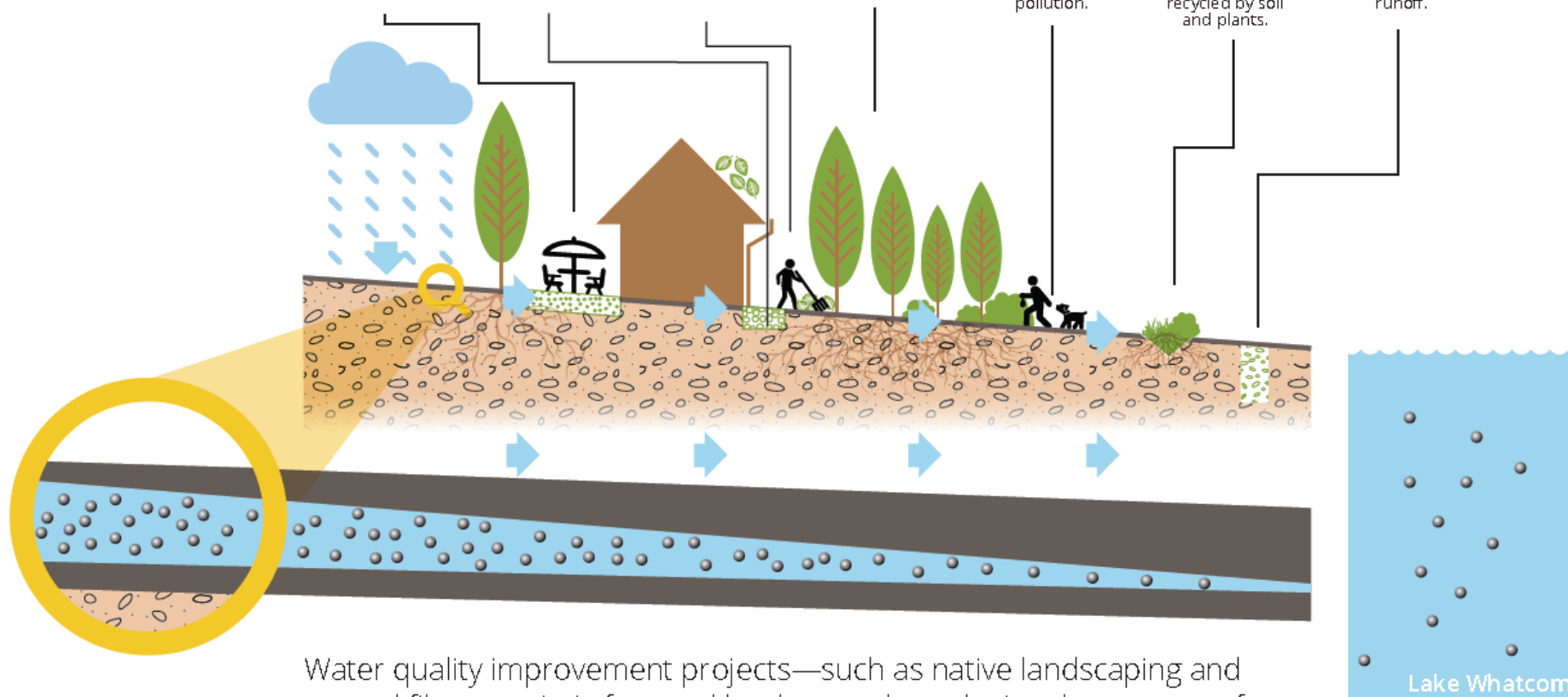
Scoop your dog's poop, bag it, and place it in the trash to reduce bacteria and phosphorus pollution.



Lake Whatcom Rain Gardens hold and slowly release runoff into the ground where phosphorus is captured and recycled by soil and plants.



Media filter drains allow water to flow through a special mix of materials designed to remove phosphorus from runoff.



● = phosphorus

HIP BMPs and Phosphorus Reduction

Native Landscaping

Combines nutrient retention and recycling (up to 85% reduction)



HIP BMPs and Phosphorus Reduction

Infiltration

Drainage through native soil soaks in available P (up to 95% reduction)



HIP BMPs and Phosphorus Reduction

Treatment

Physical, chemical, and biological processes via media mix (~85% reduction)



HIP BMPs and Phosphorus Reduction

Dispersion

Draining into native forest recycles P into vegetation (~85% reduction)



IMPORTANT HIP FACTS

Reimbursement Rate: **\$1.60/square foot of treated area**

NO CAP = the more area improved; the more reimbursement available

Eligible Properties: **Must be in the Lake Whatcom Watershed**

2017-2022: Watershed-Wide / 2023+ ONLY in City of Bellingham City Limits

All Properties Eligible for Native Landscaping

High-Impact Properties Eligible for All BMPs: **Shoreline, Creekside, Large Lawn, Large Impervious**

NEW IN 2023!! (City Residents ONLY)

Drought-Tolerant Plant Rebate - \$250 one-time award to past HIP participants to replace dead plants

Maintenance Rebate - \$250 one-time award to past HIP participants for maintenance activities

Expectation Setting is Goal #2

HIP Staff...

Determine **participant eligibility** and **project options**

Help with **project design** needs

Issue **free permits**

Provide **free technical assistance**

Process **reimbursement** payments

HIP Professionals...

Contract with a homeowner for a HIP **design or construction** project

Complete **paperwork / forms**

Procure **materials**

Do the **work**

Invoice the homeowner (get paid)

The HIP Professional List

HIP-Approved Project Designers

Contact Name	Associated Business Name	Phone	Email	Website
Adam Tullis	Coastal Geologic Services, Inc	360-647-1845 x.25	adam@coastalgeo.com	www.coastalgeo.com
Alexis Blue, P.E.	Alexis Blue, Professional Engineer	360-389-4		
Angela Nelson	Stormwater Services Northwest	360-303-5		
Beth Auerbach	Sound Habitats Ecological Design	360-207-7		
Bruce Horowitz	RIPE Landscapes	360-580-2		
CJ Huxford	Northwest Rain Solutions	360-303-5		
David Dopps	Eco-Logical Consulting	360-738-2		
Debra Gear	Urban Ecology	360-920-5		
Dominic Mocer	Mocer Construction, Inc.	360-671-3		
Gisele Sassen, PLA, AICP	Waterfront Environmental Landscape Architecture	360-464-5		
Jeff Samuels	Seed and Stone Design	360-306-4		
Jeff Hines	Jeffrey Hines	360-739-5		
John W. Matzinger	John W. Matzinger, P.E. Consulting Civil Engineer	360-671-4		
Katy Scherrer	Katy Scherrer Landscape Design	360-927-4		
Kristian E. Nason	Erin Landscape and Masonry	518-926-8		
Matthew Kulp	Matthew Kulp, Freelance Environmental Engineer	610-850-1		
Max Illman	Project Landworks	360-333-4		
Molly Maguire	Molly Maguire Landscape Architecture	360-542-4		
Patricia Lenssen	Pacific Landscape Architecture	360-684-4		
Reid Armstrong	Kulshan Services	360-393-4		
Scott Milam	Beeline Designs, LLC	360-220-6		
Sean Kydd	Plantas Nativa, LLC	360-715-5		
Shelley Weisberg	Fourth Corner Nurseries	360-592-2		
Shelley Weisberg	Moonstone Garden Design	360-739-2		
Spencer Morgan	Wild Roots Sustainable Landscapes	360-303-3		
Susan Willhoft	Chuckanut Planning and Design	360.306.7		

Note: The City of Bellingham does not warrant, endorse, or assume liability for the quality, performance, or safety of any HIP Certified Professional, its employees, or agents related to participation under this program.

HIP-Approved Designer List - Version 5. Published July 1, 2019

By attending today's webinar, you will have the option to be added to one or both lists. We will contact you to make sure we have all the correct information.

HIP-Approved Project Contractors

Contact Name	Associated Business Name	Phone	Email	Website
Angela Nelson	Stormwater Services Northwest	360-303-5628	stormnws@outlook.com	
Beth Auerbach	Sound Habitats Ecological Design	360-207-1737	beth@soundhabitats.com	www.soundhabitats.com
CJ Huxford	Northwest Rain Solutions	360-303-9725	cj@nwrainsolutions.com	www.nwrainsolutions.com
David Dopps	Eco-Logical Consulting	360-738-2440	dadopps@juno.com	
Debra Gear	Urban Ecology	360-920-9549	info@urbanecologywa.com	www.urbanecologywa.com
Dominic Mocer	Mocer Construction, Inc.	360-671-3381	dominic@mocericonstruction.com	www.mocericonstruction.com
Jeff Hines	Jeffrey Hines	360-739-9712	mjeffhines@gmail.com	
Jeff Samuels	Seed and Stone Design	360-306-0868	seedandstonedesign@gmail.com	www.seedandstonedesign.com
Joe DenHartog	On the Level Construction	360-223-7673	Joedenhartog1@gmail.com	
John W. Matzinger	John W. Matzinger, P.E. Consulting Civil Engineer	360-671-6838	Johnmatzinger1@comcast.net	
Lee Breakey	Fountain Construction, Inc.	360-303-3942	debbfc@gmail.com	www.fountainconstructionwedig.com
Levi Nyberg	Mocer Construction, Inc.	360-671-3381	levi@mocericonstruction.com	www.mocericonstruction.com
Max Illman	Project Landworks	360-333-4330	max@projectlandworks.com	www.projectlandworks.com
Scott Mauermann	Laurel Landscaping, Inc.	360-739-0558	stonework4u@aol.com	
Scott Milam	Beeline Designs, LLC	360-220-6932	eatyouryard@hotmail.com	www.beelinebamboo.com
Sean Kydd	Plantas Nativa, LLC	360-715-9655	bay@plantasnativa.com	www.plantasnativa.com
Spencer Morgan	Wild Roots Sustainable Landscapes	360-303-7412	wildrootsbellingham@gmail.com	
Victor Inera	Restoration, Inc.	360-224-6924	sltvic@yahoo.com	
Walker A. Brown	Soil and Stone Design	603-903-2846	walker@soilandstonedesign.com	www.soilandstonedesign.com/

Note: The City of Bellingham does not warrant, endorse, or assume liability for the quality, performance, or safety of any HIP Certified Professional, its employees, or agents related to participation under this program.



HIP-Approved Contractor List - Version 5. Published July 1, 2019

www.lakewhatcomHIP.org


Your home permits iss
stormwater

Your home r
don't live in th

CONGRATULATIONS!

YOU QUALIFY FOR


PROPERTY IMPROVEMENTS

Properties with large impervious areas such as roofs, driveways, and patios have a special role to play in protecting water quality. Rain water flows off these surfaces, carrying pollutants to nearby ditches, drains, and water bodies. Installing a water quality improvement project can reduce these impacts, improving your property while also protecting Lake Whatcom.

To get started, learn more about the projects you qualify for by downloading the resources below then follow the instructions to sign up for HIP.

Questions about HIP? Watch a [ten minute video](#) about Lake Whatcom water quality, HIP project options, and an overview of the HIP process.


YOUR PERSONALIZED PROPERTY RESOURCES



NATIVE LANDSCAPING

Using "right plant, right place" principles, we help you create beautiful, picturesque landscapes that can be low-maintenance and capture phosphorus in runoff to help protect water quality.


[DOWNLOAD PDF](#)



POST FILTER

Even with limited space, you can protect water quality by filtering runoff through a small but highly effective filter. The filter is specifically designed to remove pollutants that harm Lake Whatcom.

[DOWNLOAD PDF](#)



HIP-CERTIFIED PROFESSIONALS

Your property qualifies for a reimbursement for professional services. If you choose to work with HIP-Certified Professionals, all of your expenses could be reimbursable.

[SEE THE LIST!](#)

SEE IF YOU QUALIFY

ally with
manage
< for help

ows. If you
vements on


TOOLS FOR HIP PROFESSIONALS



HIP DESIGNER MANUAL

Everything you need to know to design HIP projects and find help from HIP staff is detailed in this manual. Includes step-by-step instructions for successfully navigating the HIP process from A to Z.

[DOWNLOAD THE MANUAL](#)



HIP CONTRACTOR MANUAL

A selection of important documents and guidance put together to support HIP-Certified Contractors and help them succeed on the job.

[DOWNLOAD THE MANUAL](#)




HIP SUBMITTAL FORMS

All the forms needed to organize and complete your HIP application. Just add your BMP-specific forms (available below) and site-specific plans and your packet is complete and ready for permitting!

[DOWNLOAD A FILLABLE PACKET](#)


JUST FOR HIP HOMEOWNERS



WATERSHED-FRIENDLY LANDSCAPING HANDBOOK

Program handbook for homeowners eligible for the HIP Watershed-Friendly Native Landscaping projects. Updated for 2023 with new information for Bellingham residents.


[DOWNLOAD HANDBOOK](#)



APPENDIX A: FREQUENTLY ASKED QUESTIONS (FAQ)

We're sure you have lots of questions. Start here to learn the basics about HIP Watershed-Friendly Native Landscaping projects.

[READ THE FAQ](#)



APPENDIX B: LANDSCAPING WITH NATIVE PLANTS

Details about how to plan, implement, and maintain your new native landscaping project.

[DOWNLOAD GUIDE](#)

Qualifying for Reimbursement

Design and Oversight

- Project management
- Plant selection
- Planting layout
- Drainage mapping
- Calculations / forms / paperwork
- Permitting support (no permit fees)
- Plan amendments
- If it's needed to complete the design, it's reimbursable

Planting and Construction

- Erosion control materials
- Native plants and Low-P mulch
- Rock and sand materials
- Pipes and drains
- Equipment and tools
- Labor: planting, mulching, excavation
- Delivery and haul away
- If it's needed to complete construction, it's reimbursable

Qualifying for Reimbursement

#1. WA State License

Washington State Department of Revenue

< Business Lookup

License Information:

Entity name: [REDACTED]

Business name: [REDACTED]

Entity type: Limited Liability Company

UBI #: 604-533-714

Business ID: 001

Location ID: 0001

Location: Active

<https://dor.wa.gov/open-business/apply-business-license>

#2. CoB Endorsement

Location ID: 0001

Location: Active

Location address: [REDACTED]

Mailing address: [REDACTED]

Excise tax and reseller permit status: [Click here](#)

Secretary of State status: [Click here](#)

Endorsements

Endorsements held at this location	License #	Count	Details	Status
Bellingham General Business	067072			Active
Blaine General Business - Non-Resident				Active
Burlington General Business - Non-				Active

<https://cob.org/services/business/business-registration>



Homeowner Incentive Program Business Training Webinar

QUESTIONS?