

# Creating interest with native landscaping Wet Garden

## benefits

- ✓ improve your landscape
- ✓ control runoff
- ✓ receive financial reimbursement
- ✓ protect Lake Whatcom



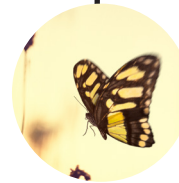
### beautify your yard

Use water-loving plants to transform wet depressions into beautiful gardens.



### reduce maintenance

Landscaping with native plants and mulch allows more time to enjoy your garden with less upkeep.



### create a sanctuary

Make a relaxing garden retreat that attracts birds and butterflies.

## Want to create beautiful gardens that complement your HIP Native Landscaping design?

Wet gardens add interest and structure to your landscape, help control runoff, and require minimal maintenance. Enhance the wet, low-lying areas on your property by installing native water-loving plants that will happily soak up extra rainwater.

Wet garden materials such as native plants and mulches are reimbursed by HIP for up to \$1.60 per square foot of the wet garden, providing it is part of an approved HIP Native Landscaping project.

